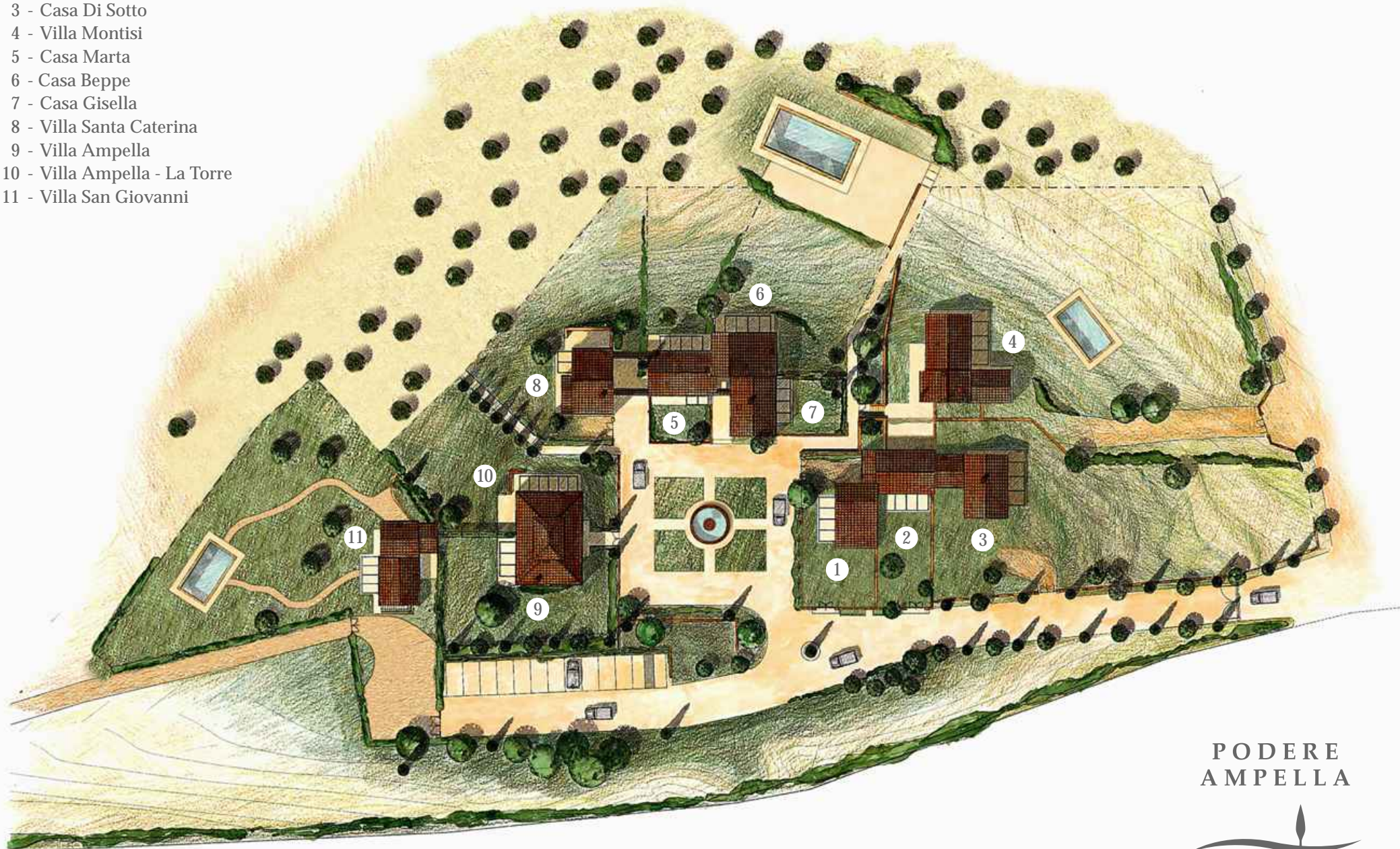




Casa & Villa Plans

- 1 - Casa Di Sopra
- 2 - Casa Di Mezzo
- 3 - Casa Di Sotto
- 4 - Villa Montisi
- 5 - Casa Marta
- 6 - Casa Beppe
- 7 - Casa Gisella
- 8 - Villa Santa Caterina
- 9 - Villa Ampella
- 10 - Villa Ampella - La Torre
- 11 - Villa San Giovanni



PODERE
AMPELLA

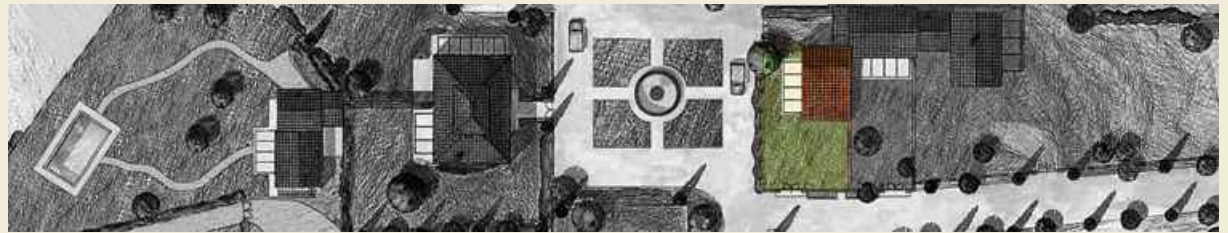


t u s c a n y

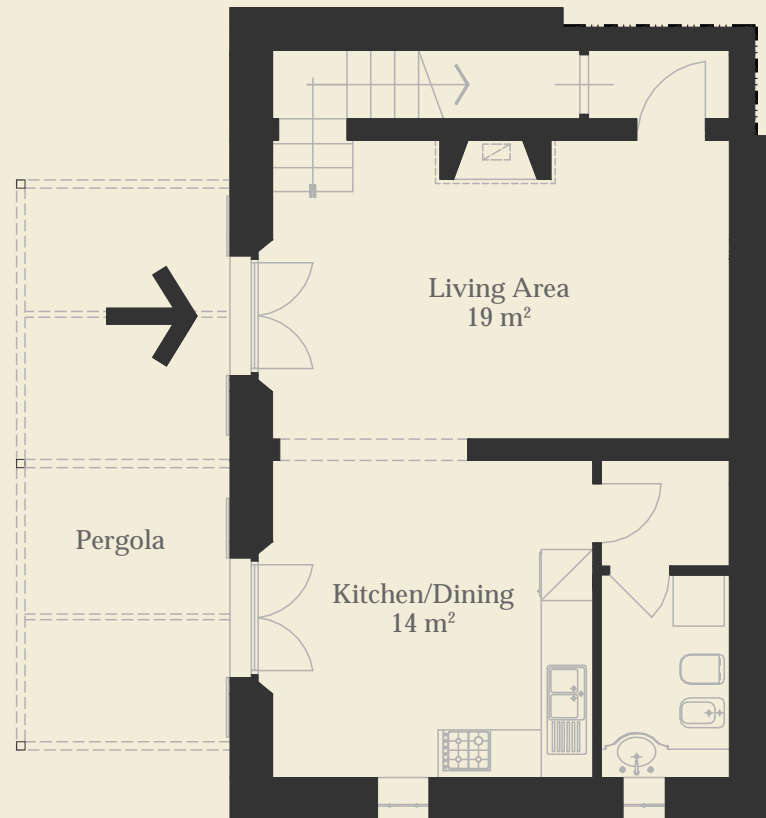
Casa di Sopra

1

Casa di Sopra is an elegant two-storey town house with nice vistas both north and southwards. The interior is made up of a spacious living/dining area with a traditional fireplace on the ground floor area leading onto a Pergola for al fresco dining, with 2 bedrooms and 2 bathrooms. The town house is accessed from the central courtyard and has a small private garden.



GROUND FLOOR

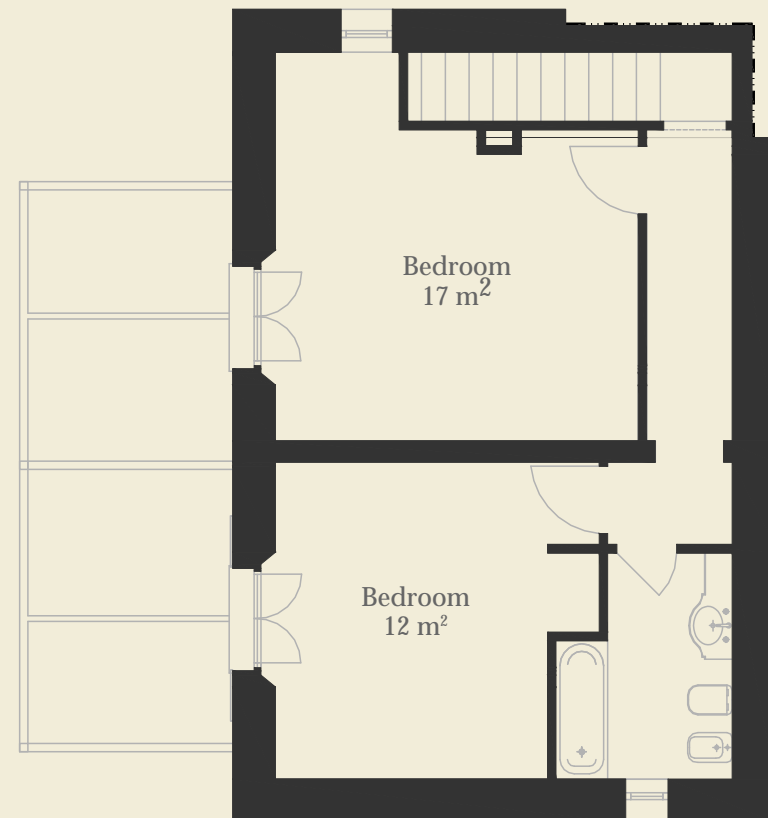


Casa di Sopra

Features

Spacious living/dining area, 2 bedrooms and 2 bathrooms, pergola, private garden (town house – 120m², garden - 157m²).

FIRST FLOOR



Casa di Mezzo

2



Casa di Mezzo is a delightful and articulated town house offering a variety of views depending on the time of day with its three gardens. The interior is made up of a 2-bedroom, 2 bathroom town house with a spacious living/dining area leading onto a viewing balcony and upper garden with a pergola. The guest apartment located on the lower level has its own independent access and terrazza garden area.

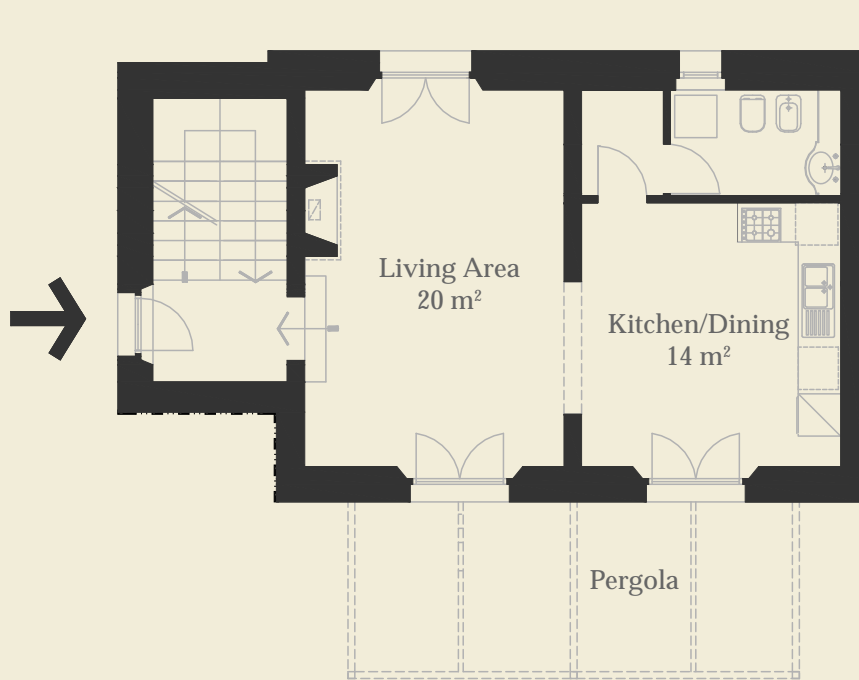


PODERE
AMPELLA

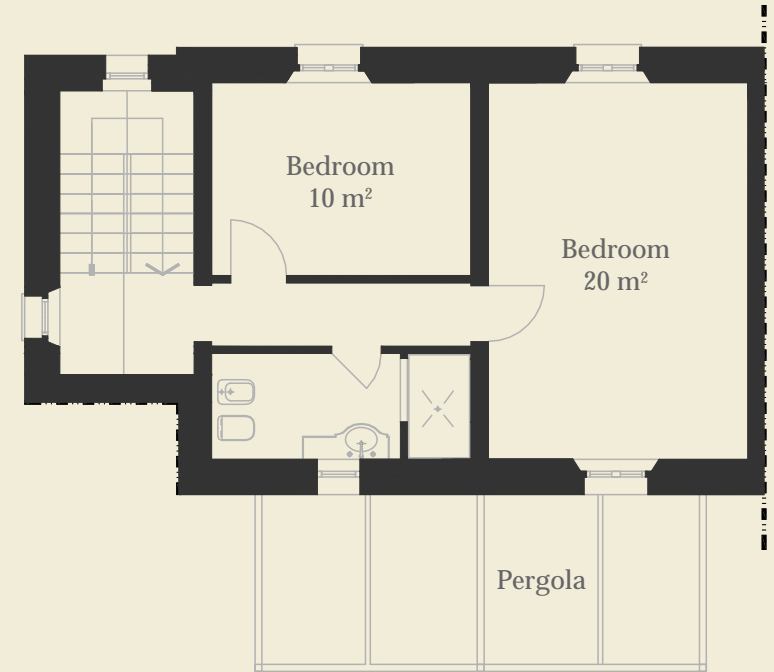


Casa di Mezzo

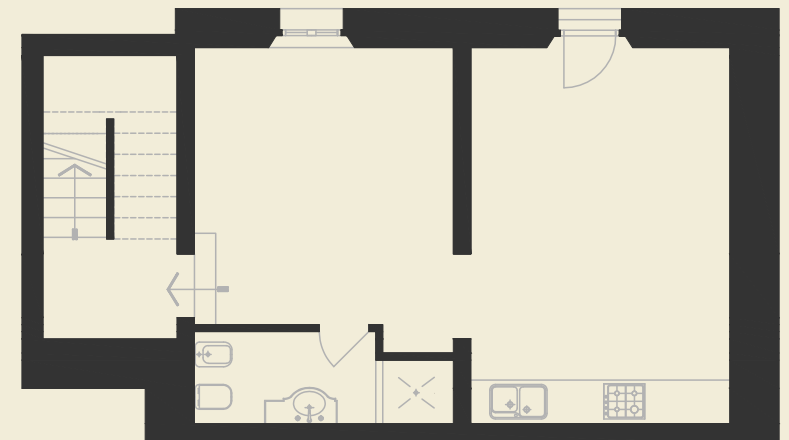
GROUND FLOOR



FIRST FLOOR



LOWER LEVEL



Casa di Mezzo

Features

Town house (128m²) with spacious living/dining area, 2 bedrooms and 2 bathrooms, pergola, 2 upper gardens. Guest apartment (50m²) with 1 bedroom and 1 bathroom, pergola and lower terrazza area.

Casa di Sotto

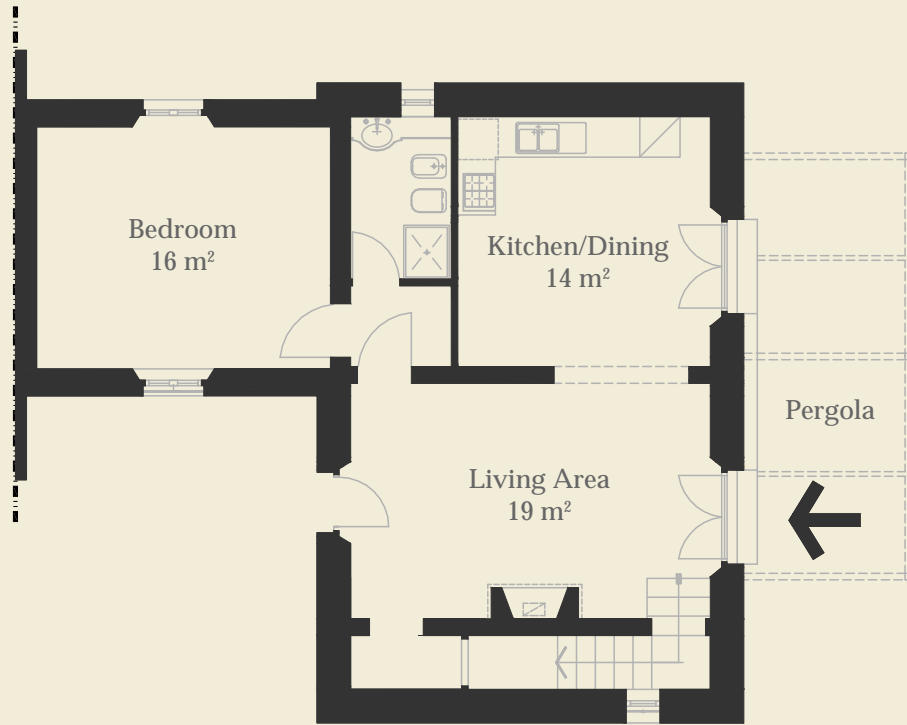
3



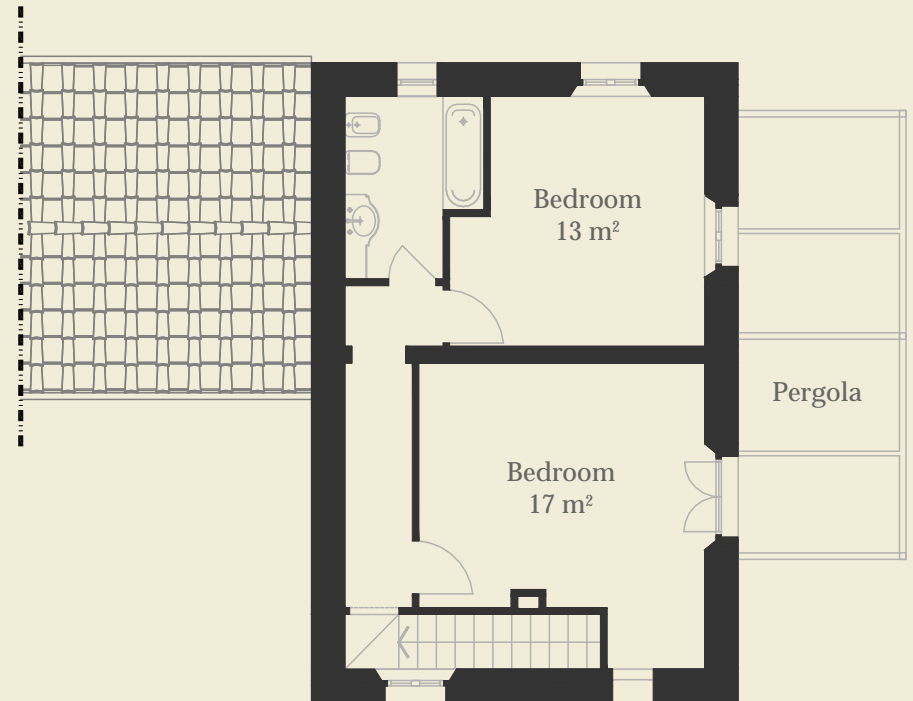
Casa di Sotto is a splendid 3-bedroom town house that enjoys magnificent views towards the village of Montisi and boasts independent vehicle access as well as a large garden. The interior is made up of a spacious living/dining area with traditional fireplace that effortlessly leads onto the Pergola area for al fresco dining.



GROUND FLOOR



FIRST FLOOR



Casa di Sotto

Features

Town house (140m²) with spacious living/dining area, 3 bedrooms and 2 bathrooms, pergola, private access, parking and large garden (1008m²).

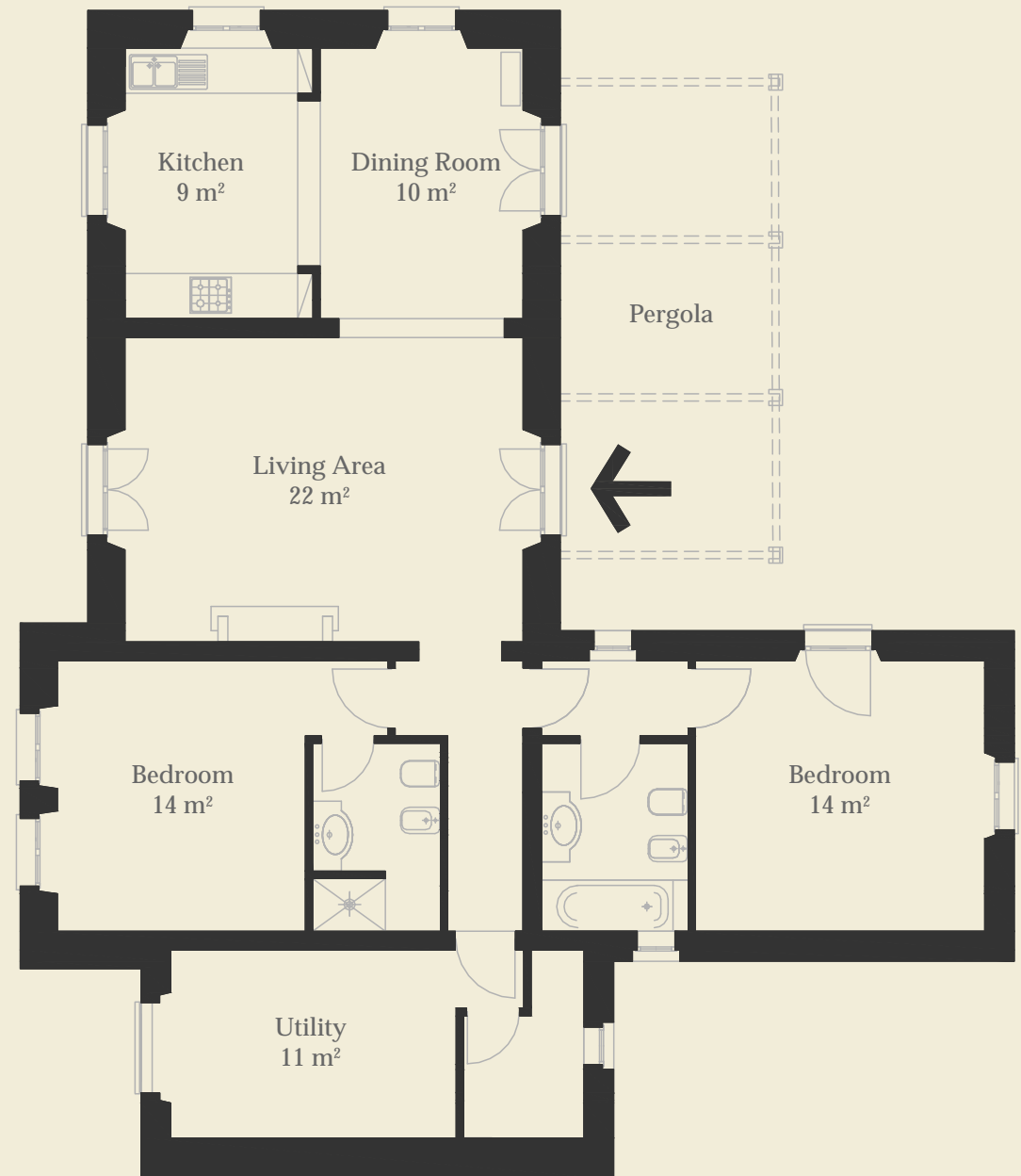
Villa Montisi

4

Villa Montisi is a charming single storey rustic offering breathtaking vistas both northwards and towards the village of Montisi. The interior is made up of a spacious living/dining area leading onto a Pergola with up to 3 bedrooms and 3 bathrooms. The villa has its own independent access, private pool and a large garden.



GROUND FLOOR



Villa Montisi

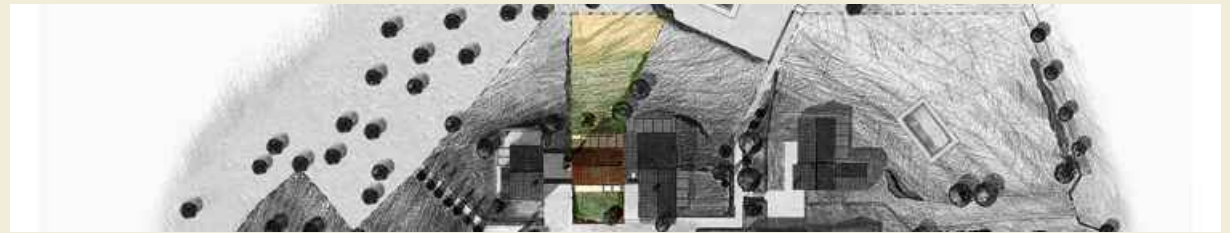
Features

Spacious living/dining area with traditional fireplace, up to 3 bedrooms and 3 bathrooms, pergola, private access, parking, swimming pool and large garden (Villa – 130m², garden – 2000m²).

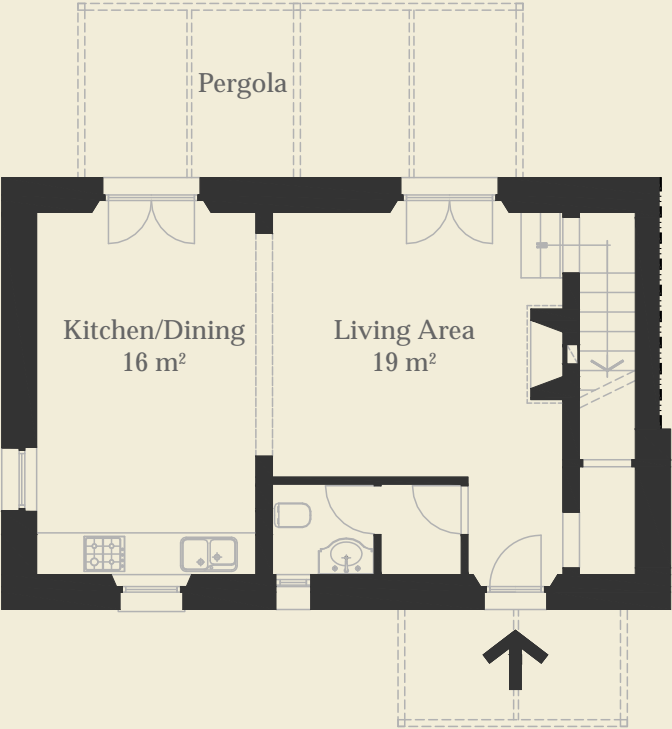
Casa Marta

4

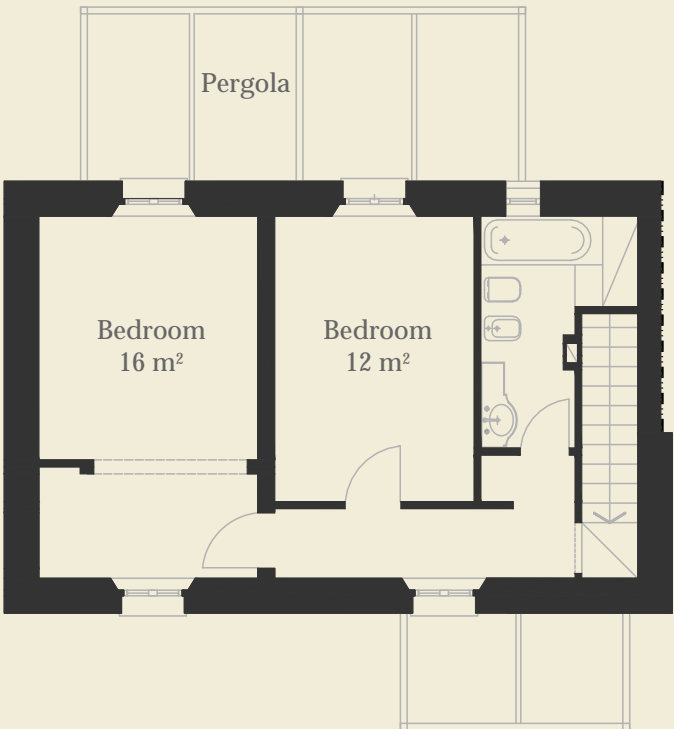
Casa Marta is a beautiful 2-bedroom town house that boasts one of the best views in Tuscany. Casa Marta is accessed from the central courtyard with its interior made up of a spacious living/dining area complete with traditional fireplace that effortlessly leads onto the Pergola area for breathtaking views. A large (wine) cellar and proximity to the communal pool makes this apartment a very attractive investment.



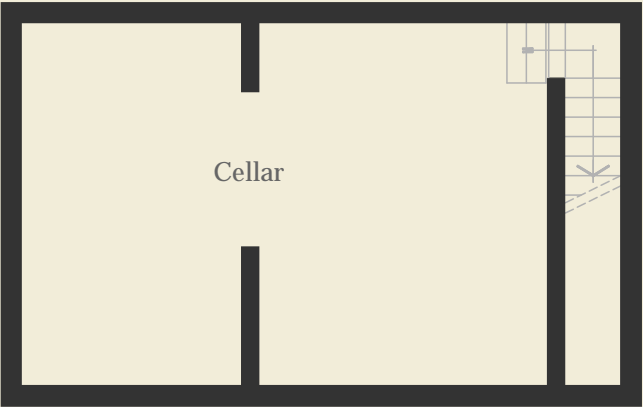
GROUND FLOOR



FIRST FLOOR



CELLAR



Casa Marta

Features

Town house (120m²) with spacious living/dining area, 2 large bedrooms and 2 bathrooms, pergola, 2 gardens (360m²) and cellar (60m²).

Casa Beppe

6

Casa Beppe is a characteristic 2-bedroom town house that probably enjoys the best views of the entire Podere Ampella. Casa Beppe is accessed from the central courtyard with its interior made up of a spacious living/dining area complete with traditional fireplace that effortlessly leads onto the Pergola area for breathtaking views. Casa Beppe also has a large (wine) cellar, private garden and is ideally located with its proximity to the communal pool.

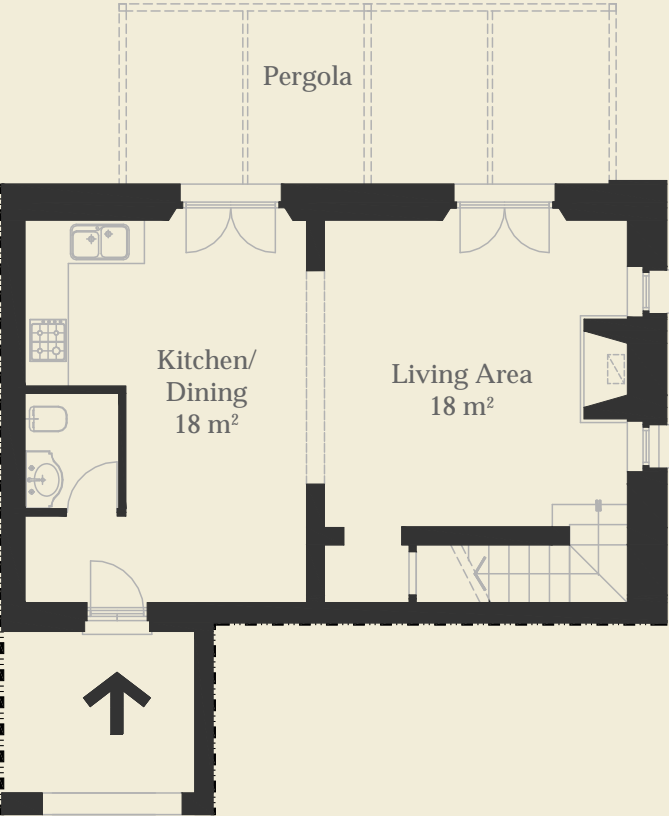


PODERE
AMPELLA

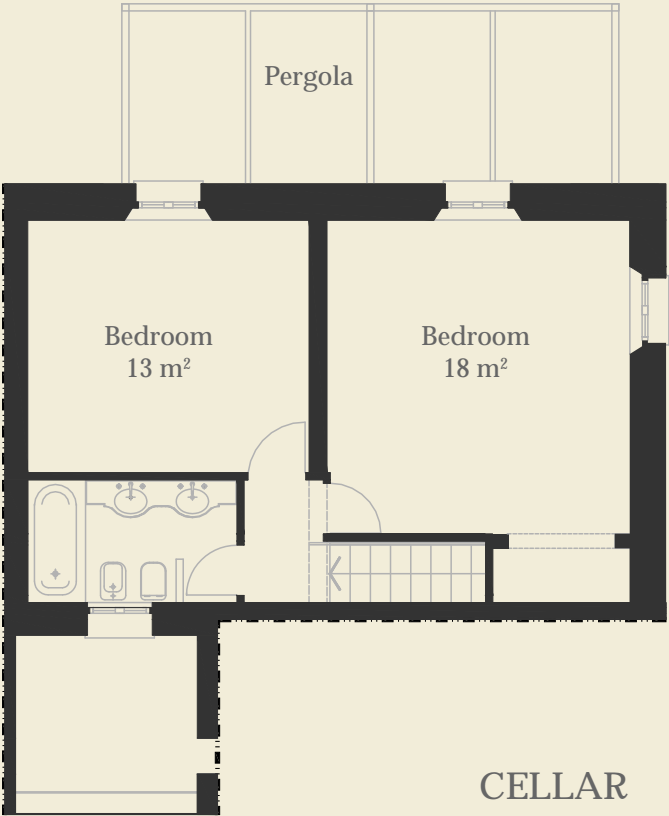


Casa Beppe

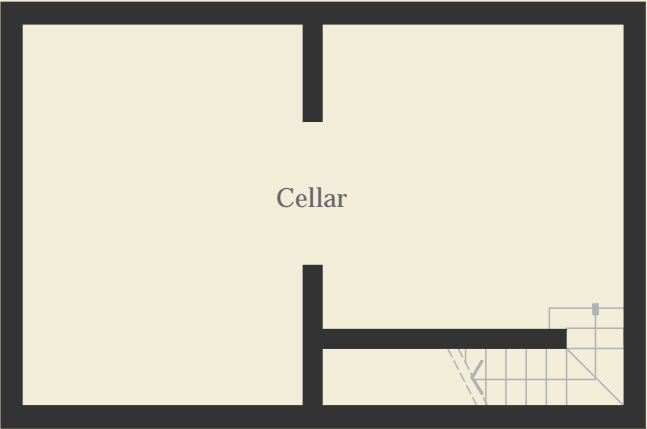
GROUND FLOOR



FIRST FLOOR



CELLAR



Casa Beppe

Features

Town house (120m²) with spacious living/dining area, 2 large bedrooms and 2 bathrooms, pergola, garden (480m²) and cellar (60m²).

Casa Gisella

7

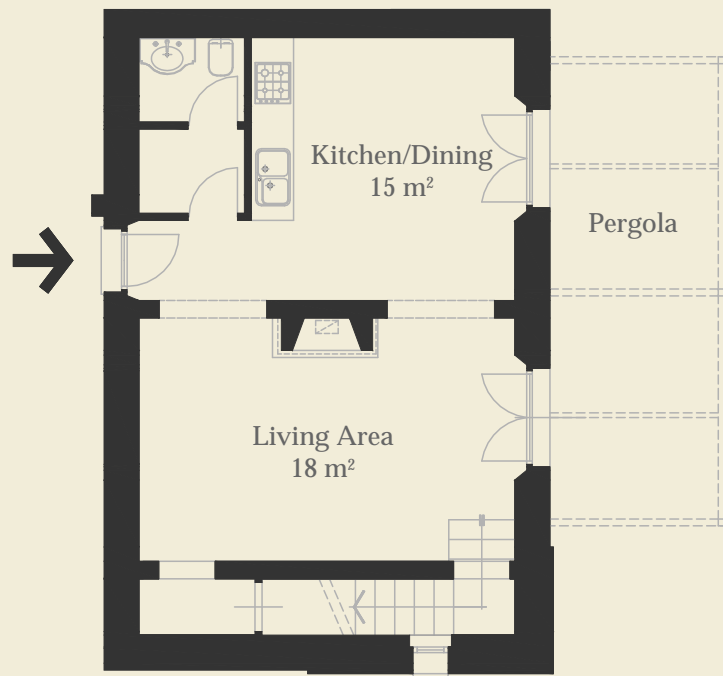


Casa Gisella is a characteristic 2-bedroom town house that enjoys magnificent views towards the village of Montisi. Casa Gisella is accessed from the central courtyard with its interior made up of a spacious living/dining area complete with traditional fireplace that effortlessly leads onto the Pergola area for al fresco dining. A large (wine) cellar and proximity to the communal pool makes this apartment a very attractive investment.

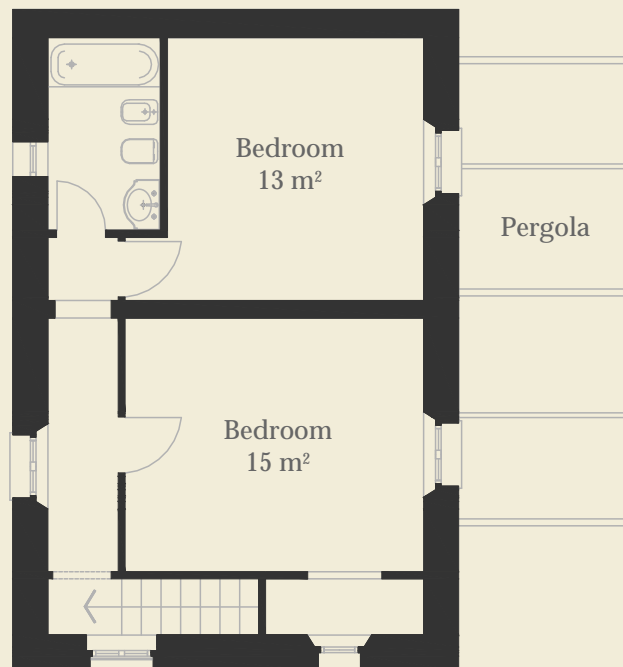


Casa Gisella

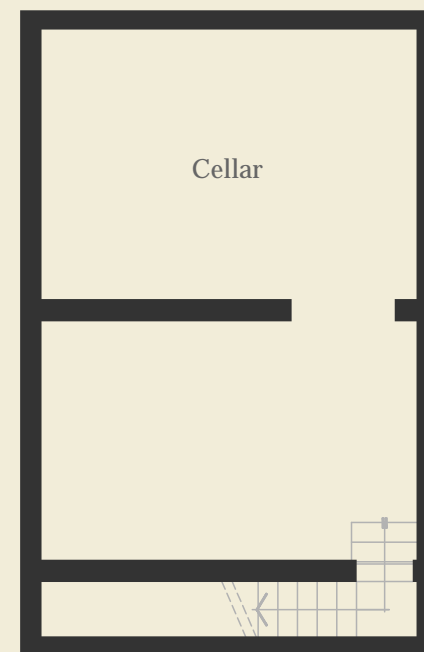
GROUND FLOOR



FIRST FLOOR



CELLAR



Casa Gisella

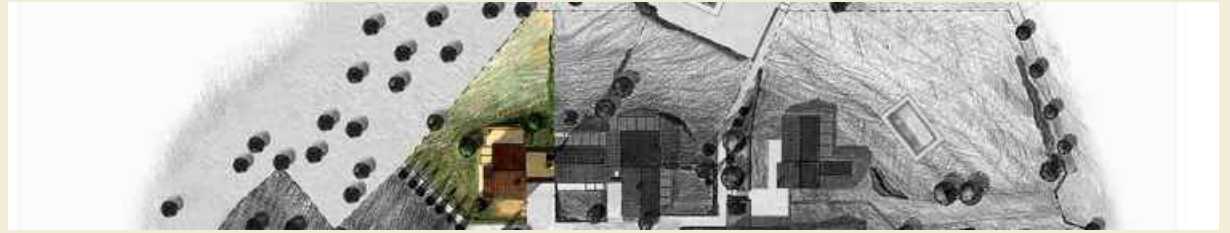
Features

Town house (120m²) with spacious living/dining area, 2 large bedrooms and 2 bathrooms, pergola, garden (94m²) and cellar (60m²).

Villa Santa Caterina

8

Villa Santa Caterina is a characteristic 2-bedroom villa that boasts magnificent views both northwards and towards San Giovanni d'Asso. The villa is accessed from the central courtyard with its interior made up of a spacious living/dining area complete with traditional fireplace that effortlessly leads onto the Pergola area for al fresco dining. In addition to the 2 large bedrooms, the Villa has its own large (wine) cellar and garden as well as an exclusive courtyard with its characteristic arches.

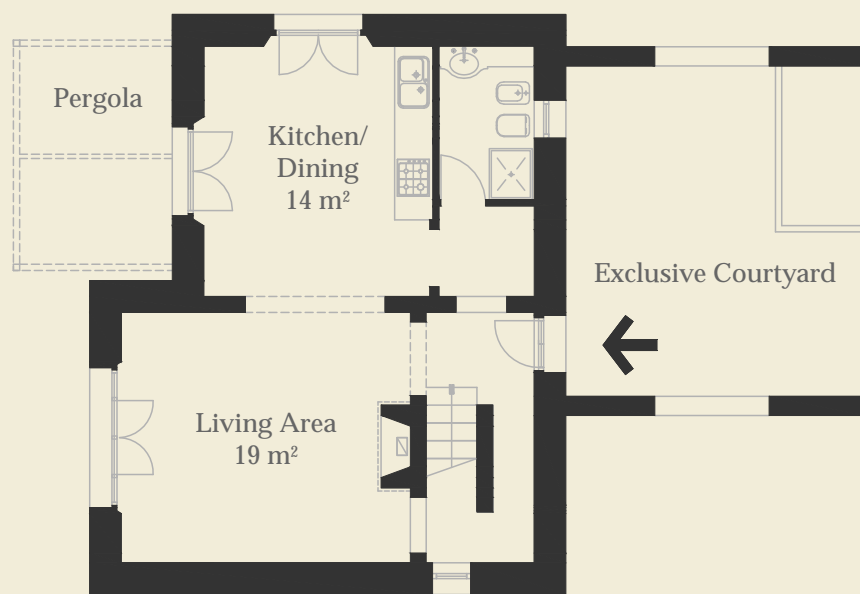


PODERE
AMPELLA

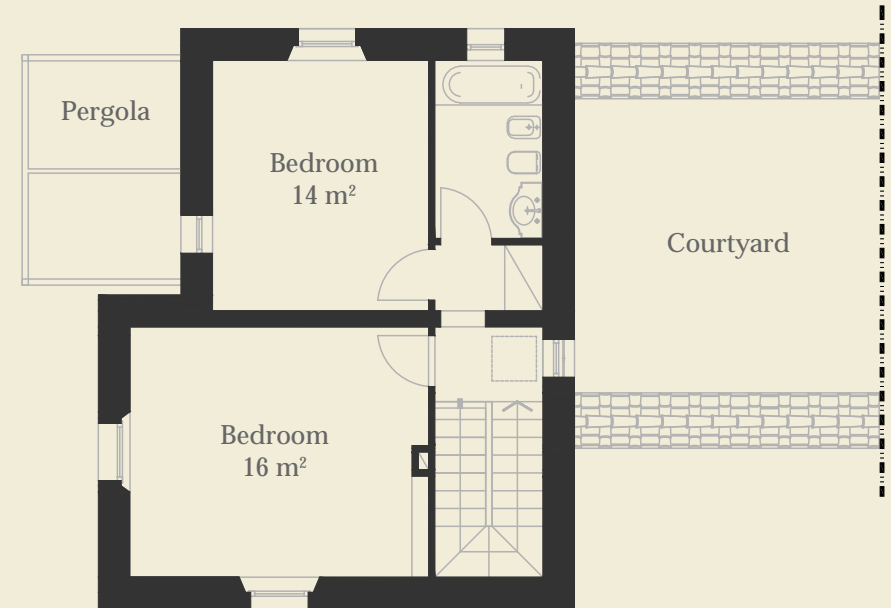


Villa Santa Caterina

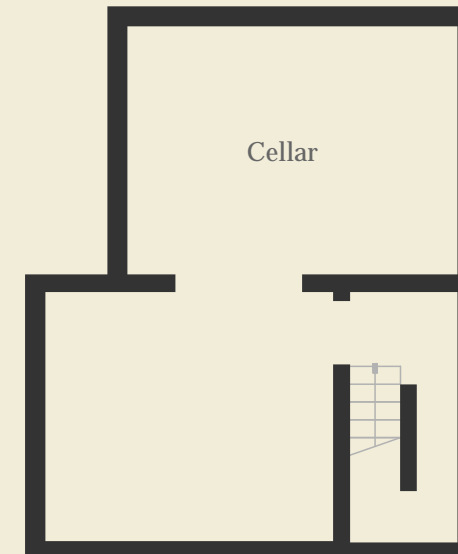
GROUND FLOOR



FIRST FLOOR



CELLAR



Villa Santa Caterina

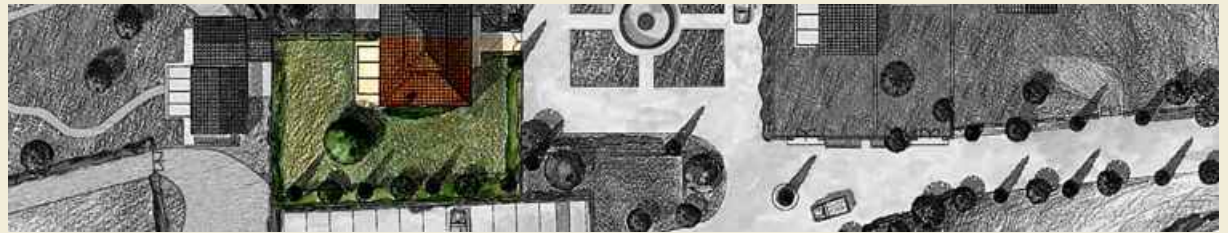
Features

Villa own house (126m²) with spacious living/dining area, 2 large bedrooms and 2 bathrooms, pergola, exclusive courtyard, large garden (537m²) and cellar (60m²).

Villa Ampella

9

Villa Ampella is a 3-bedroom town house and portion of a more extensive noble Villa. The villa is accessed from the central courtyard with its interior composed of 3 bedrooms, a large living/dining area complete with traditional fireplace that effortlessly leads onto a west-facing Pergola area for al fresco dining.

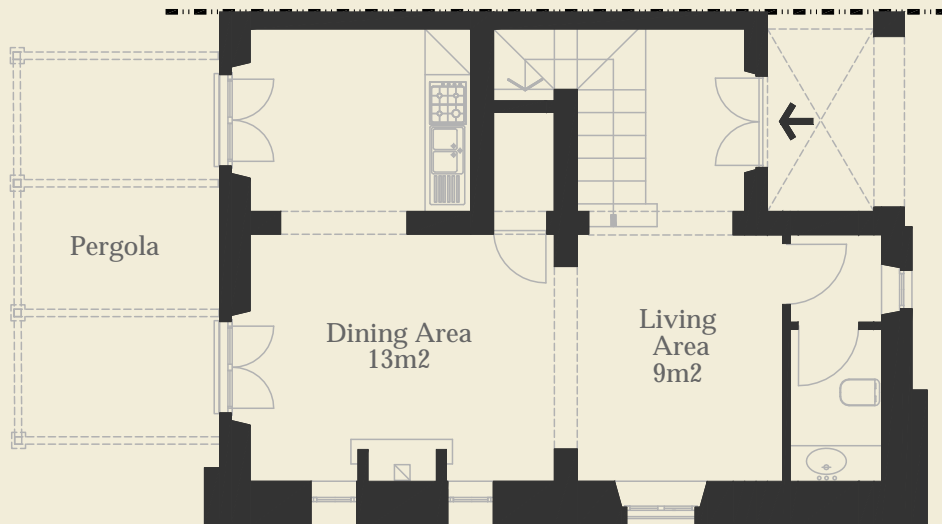


PODERE
AMPELLA

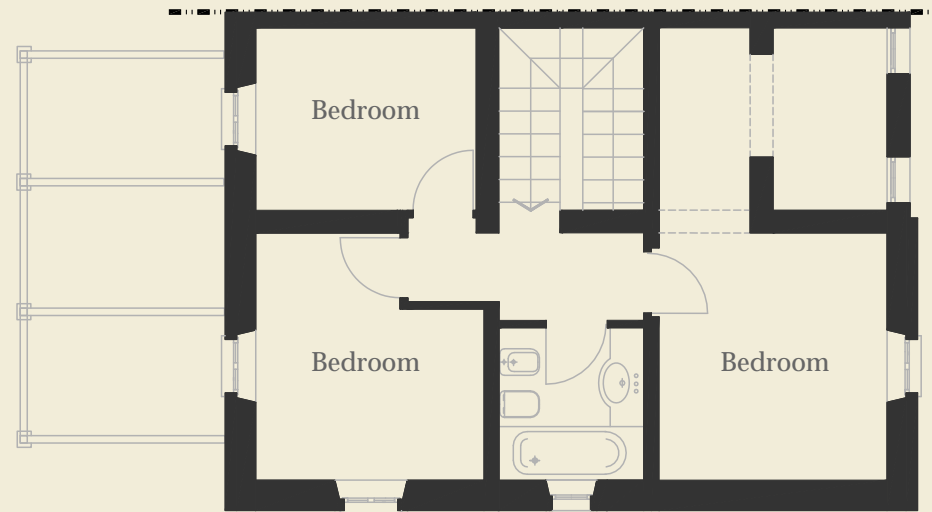


Villa Ampella

GROUND FLOOR



FIRST FLOOR



Villa Ampella

Features

Town house (120m²) with spacious living/dining area, 3 bedrooms, up to 3 bathrooms, pergola, large garden (389m²).

Villa Ampella - La Torre



10

Villa Ampella – La Torre is a magnificent 3-bedroom portion of a noble Villa. The villa is accessed from the central courtyard with its interior composed of a spacious living/dining area complete with traditional fireplace that effortlessly leads onto an large Pergola area for al fresco dining. In addition to the 2 generous bedrooms, the tower bedroom boasts unique and unsurpassed 360° views.

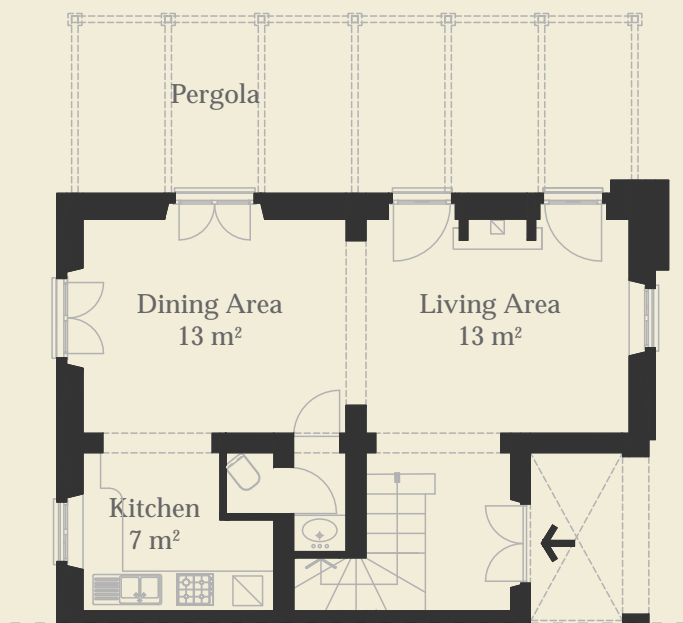


PODERE
AMPELLA

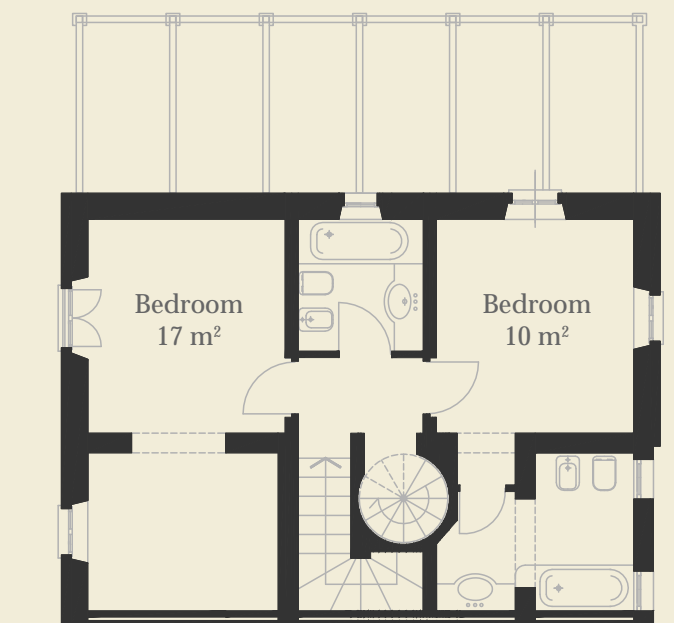


Villa Ampella - La Torre

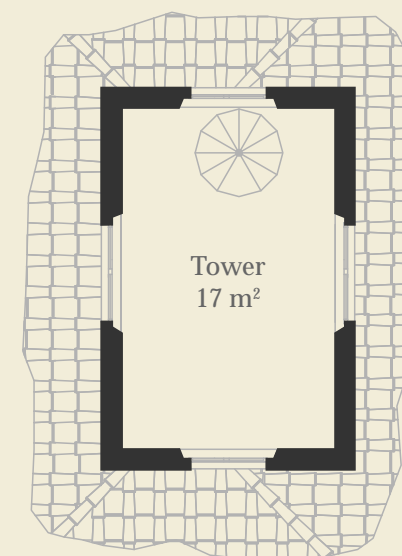
GROUND FLOOR



FIRST FLOOR



SECOND FLOOR



Villa Ampella - La Torre

Features

Town house (143m²) with spacious living/dining area, 2 large bedrooms, tower bedroom, 3 bathrooms & WC, pergola, large garden (433m²).

Villa San Giovanni



Villa San Giovanni is a charming & characteristic rustic offering magnificent vistas towards San Giovanni d'Asso, independent access, private pool and a large landscaped garden. The interior is made up of a 2-bedroom villa and a self-contained guest apartment each with separate access and communicating stairs.

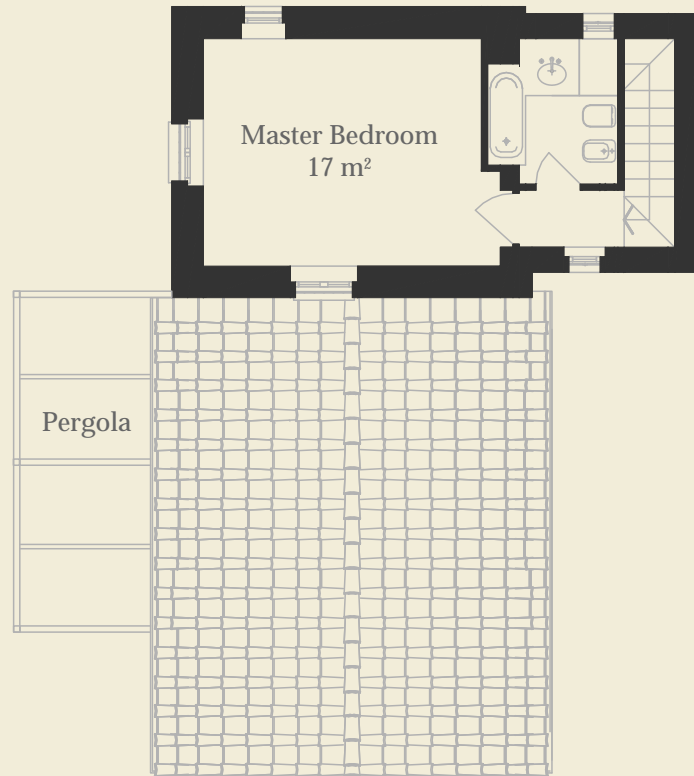


PODERE
AMPELLA

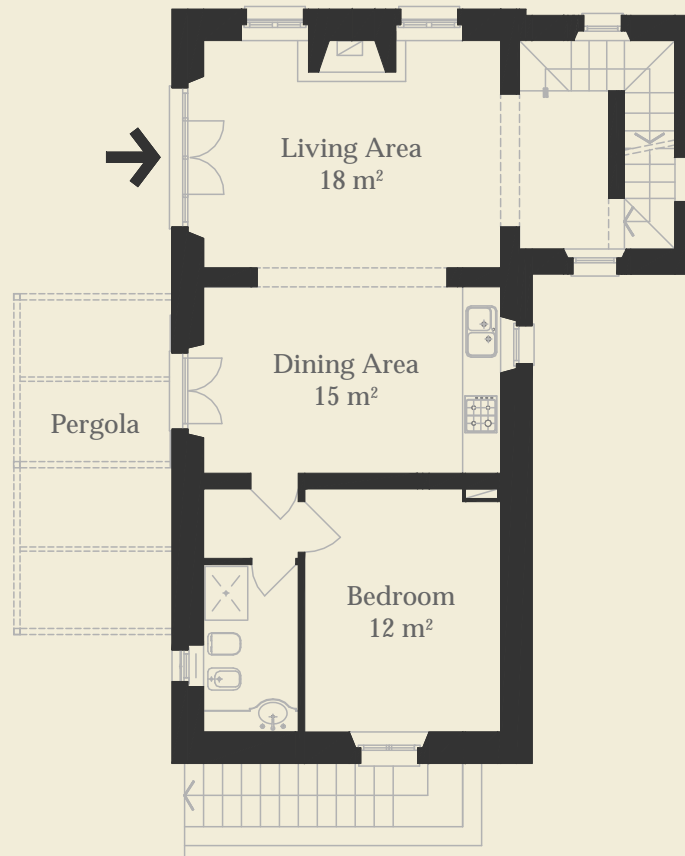


Villa San Giovanni

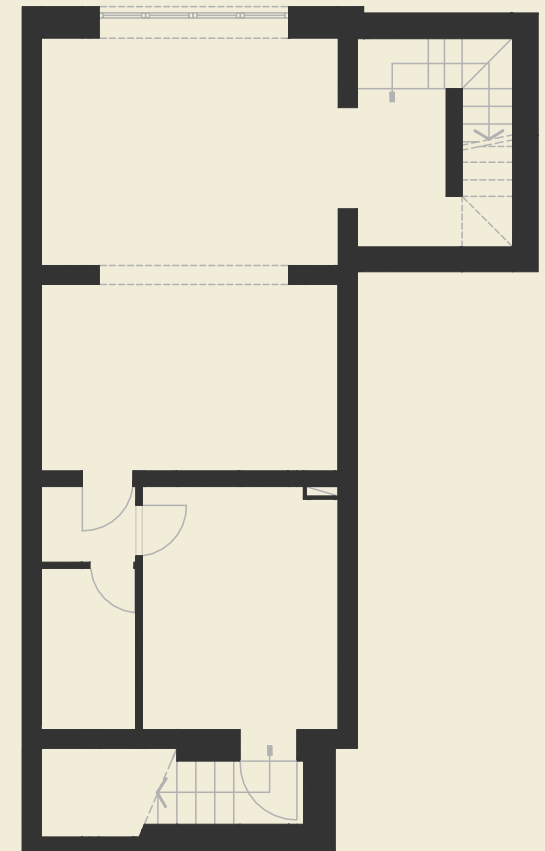
FIRST FLOOR



GROUND FLOOR



LOWER LEVEL



Villa San Giovanni

Features

Villa (115m²) with spacious living/dining area, 2 bedrooms and 2 bathrooms, pergola, upper garden.

Guest apartment (75m²) with 1 bedroom and 1 bathroom, pergola and lower terrazza area. Private access, parking, swimming pool and generous garden (1300m²).



www.podereampella.com